

**LEGEND**

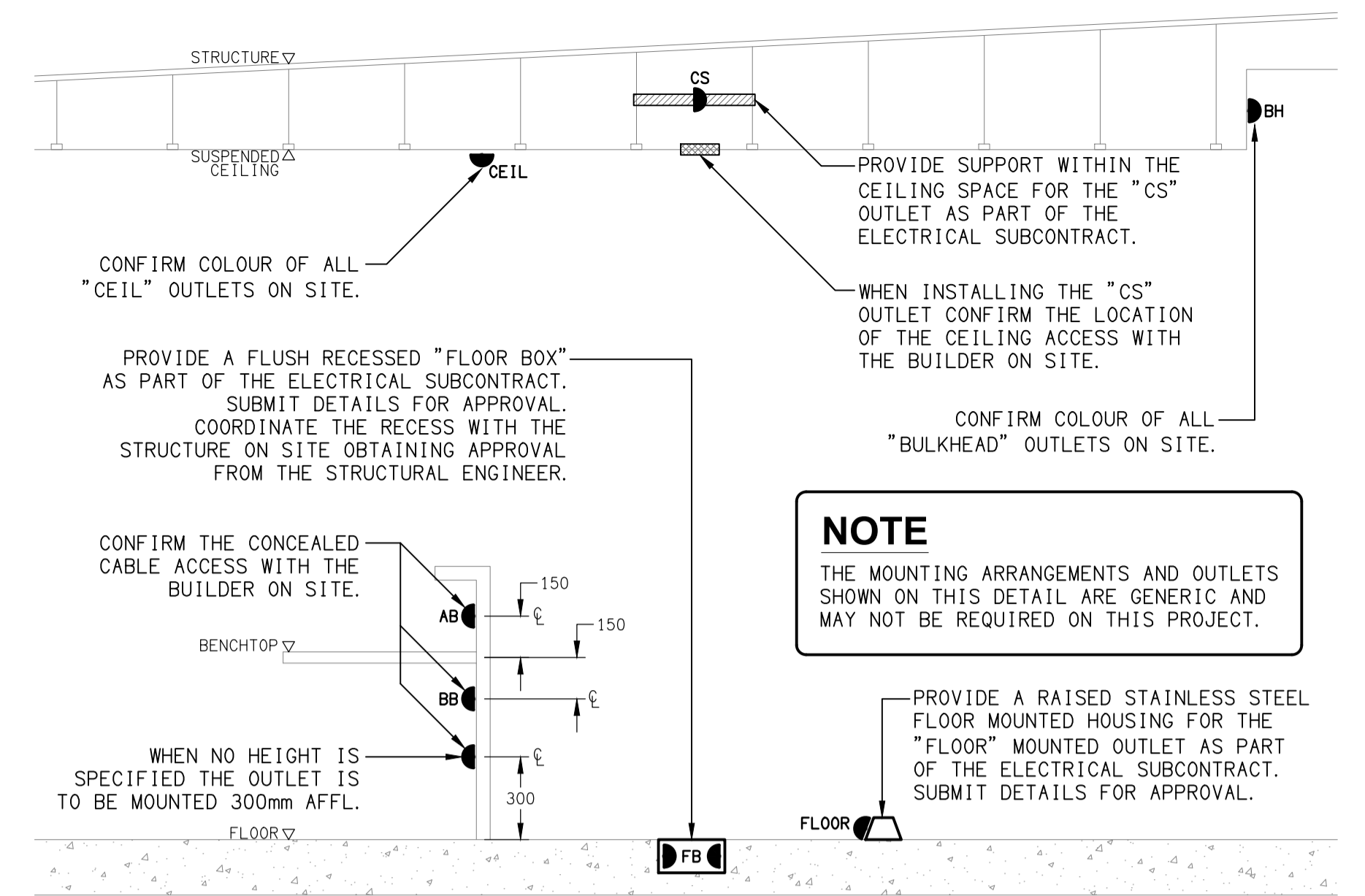
- ELECTRICAL SERVICES SWITCHBOARD.
- SWITCHBOARD / CONTROL PANEL NOT PROVIDED AS PART OF THE ELECTRICAL SUBCONTRACT.
- SINGLE POWER OUTLET.
- DOUBLE POWER OUTLET.
- SPECIAL PURPOSE POWER OUTLET.
- SINGLE PHASE ISOLATOR.
- THREE PHASE ISOLATOR.
- JUNCTION BOX AS NOTED.
- ELECTRICAL CABLE TRAY, TYPE AS NOTED.
- WORKSTATION OUTLETS.
- CONDUIT ROUTE.
- x DENOTES CONDUIT TYPE.
- PIT x □ ELECTRICAL PIT, TYPE AS NOTED.
- HAND DRYER CONNECTION.
- LIGHTING PRESENCE DETECTOR SWITCH.
- ONE-WAY LIGHT SWITCH.
- TWO-WAY LIGHT SWITCH.
- LIGHTING SWITCHPANEL, TYPE x.
- CIRCUIT LINE.
- SWITCH LINE.
- DB-x - Py POWER CIRCUIT DESIGNATION. DENOTES DB AND CIRCUIT.
- ELECTRICAL EQUIPMENT AS NOTED.
- FITTING TO BE SURFACE MOUNTED.
- OUTLET MOUNTED WITHIN RECESS KIT.
- CAT-6 UTP RJ45 COMMUNICATIONS OUTLET.
- CAT-6A STP RJ45 COMMUNICATIONS OUTLET.
- CAT-6 CCTV RJ45 PLUG, TYPE x.
- CAT-6 VAPE RJ45 PLUG.
- ELECTRIC STRIKE CABLED CONNECTION, TYPE x.
- ACCESS CONTROL CARD READER CABLE.
- INTRUDER DETECTION REED SWITCH CABLE.
- INTRUDER DETECTION SENSOR CABLE.
- INTRUDER DETECTION PIZEO SIREN CABLE.
- TEMPERATURE CONTROLLED EXHAUST FAN.

**LEGEND**

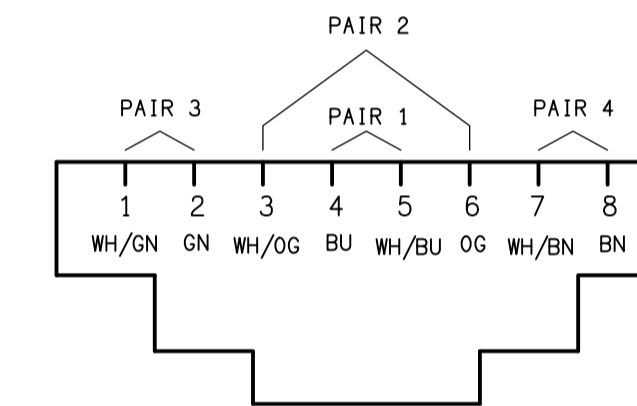
- E1: RECESSED LED EMERGENCY LIGHT, WHITE.
- E2: CUSTOM SURFACE CAN MOUNTED LED EMERGENCY LIGHT, BLACK.
- E3: RECESSED LED EMERGENCY LIGHT, BLACK.
- E4: SURFACE LED EMERGENCY LIGHT, WHITE.
- EX: EMERGENCY LED EXIT LIGHT, WHITE.
- EX WP: WEATHERPROOF EMERGENCY LED EXIT LIGHT, WHITE.
- Lx: LIGHT FITTING C/W NON-MAINTAINED EMERGENCY BATTERY PACK. TYPE AS NOTED.
- L1: 2800 LONG ROD SUSPENDED EXTRUSION LIGHT.
- L2: 2400 LONG ROD SUSPENDED EXTRUSION LIGHT.
- L3: EXTERNAL FLOOD LIGHT.
- L4: 1000 LONG ROD SUSPENDED EXTRUSION LIGHT.
- L5: 1800 LONG ROD SUSPENDED EXTRUSION LIGHT.
- L6: SURFACE MOUNTED CAN DOWNLIGHT.
- L7: RECESSED DOWNLIGHT.
- L8: 600 x 600 SURFACE MOUNTED FLAT PLATE LED LIGHT.
- L9: 2100 LONG ROD SUSPENDED EXTRUSION LIGHT.
- L10: 3600 LONG ROD SUSPENDED EXTRUSION LIGHT.
- L11: CEILING BULKHEAD LED STRIP LIGHT.
- L12: RECESSED DOWNLIGHT.
- L13: RECESSED DOWNLIGHT.
- L14: RECESSED DOWNLIGHT.
- L15: 1200 LONG SURFACE BATTEN C/W PRESENCE SENSOR.
- L16: 1200 LONG SURFACE BATTEN.
- L17: SURFACE MOUNTED BUNKER LIGHT.
- L18: SURFACE MOUNTED BUNKER LIGHT.
- L19: BOLLARD LIGHT.
- L20: INGROUND UP LIGHT.
- AS1670 COMPLIANT FIRE INDICATOR PANEL INCORPORATING THE EWCIE AND FDCIE.
- SURFACE MOUNTED ADDRESSABLE AS7240, 7 POINT SMOKE DETECTORS WITH A PERFORMANCE OF 6 TO 12 % OBS/M SET AT 7.8 %.
- CONCEALED SPACE ADDRESSABLE AS7240, 7 POINT SMOKE DETECTORS WITH A PERFORMANCE OF 6 TO 12 % OBS/M SET AT 7.8 %. PROVIDE THE DETECTOR WITH A REMOTE INDICATOR AND ACCESS BRACKET AS REQUIRED.
- SURFACE MOUNTED AS7240, 5:2018 TYPE B SEALED FIXED TEMPERATURE ADDRESSABLE THERMAL DETECTOR WHITE.
- SURFACE MOUNTED AS7240 COMPLIANT WHITE EMERGENCY EVACUATION SPEAKER C/W PLASTIC HOUSING.
- RECESSED AS7240 COMPLIANT EMERGENCY EVACUATION SPEAKER C/W WHITE PLASTIC GRILL.
- SURFACE MOUNTED WEATHERPROOF AS7240 COMPLIANT EVACUATION HORN SPEAKER.
- WALL MOUNTED FIRE ALARM STROBE TO AS1670-2018 AND AS7240.
- PUBLIC ADDRESS RECESSED SPEAKER.
- PUBLIC ADDRESS SURFACE MOUNTED SPEAKER.
- PUBLIC ADDRESS HORN SPEAKER.

**LEGEND**

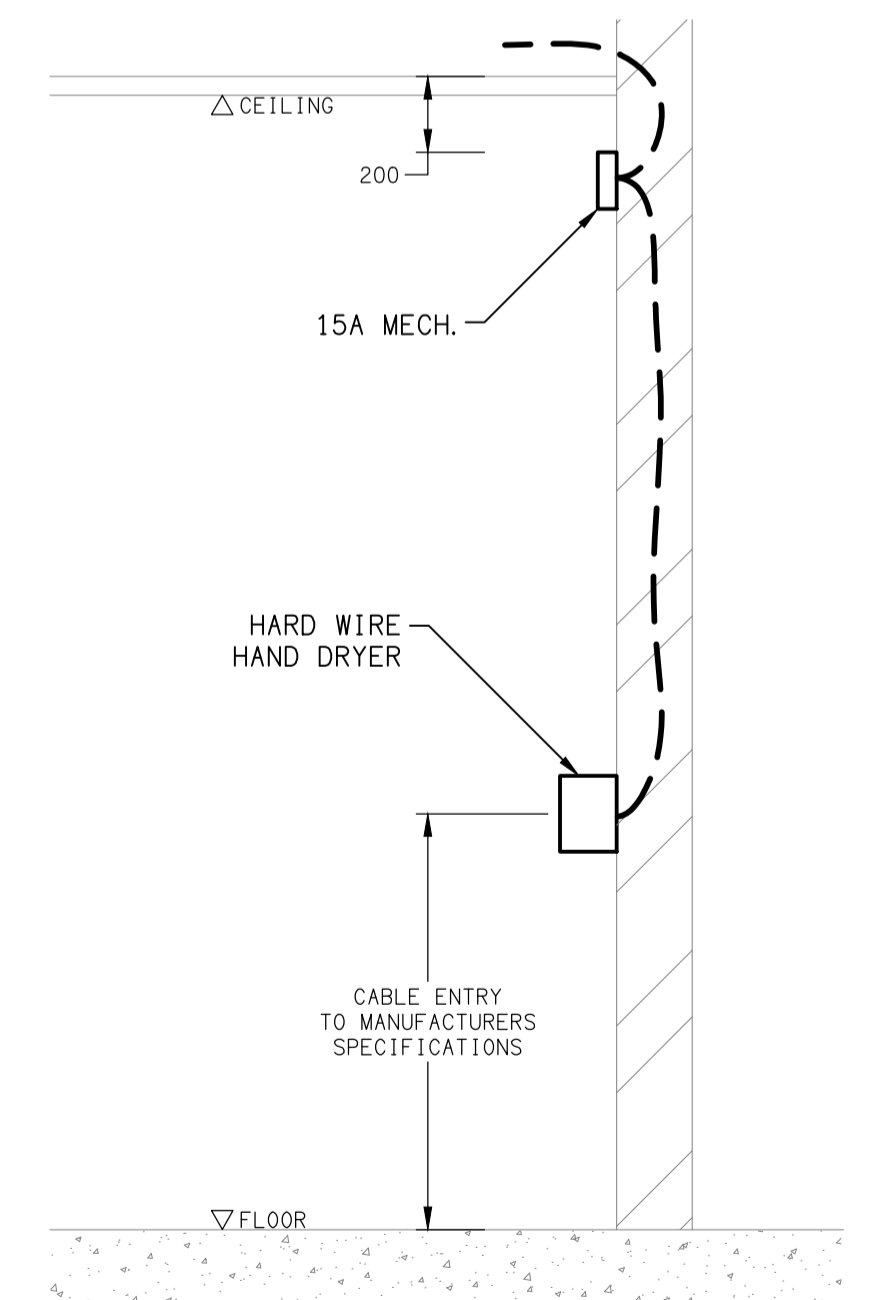
- M1: RETAIL METER.
- M2: PRIVATE MULTI FUNCTION METER.
- M3: NCC BCA PART J ENERGY METER.
- M4: SOLAR ENERGY METER.
- MU: CIRCUIT BREAKER MOTOR UNIT.
- WPR: WIRELESS CONTROLLED PROTECTION RELAY.
- GSD: SOLAR GENERATION SIGNALING DEVICE.
- DL: SOLAR DATA LOGGER.
- CT: SOLAR NETWORK PROTECTION CTs.
- SM: SOLAR NETWORK PROTECTION SMART METER (WIRELESS).
- MTS: MANUAL TRANSFER SWITCH.
- REFER TO DETAIL NOTED FOR THE AREA SHOWN HATCHED. ADDITIONAL OUTLETS & FITTINGS MAY BE SHOWN ON DETAIL.
- FUSE.
- SINGLE PHASE.
- THREE PHASE.
- CURRENT TRANSFORMER C/W REMOVABLE LINK.
- FUSE LINK.
- COMBINED FUSE SWITCH.
- CIRCUIT BREAKER.
- ISOLATOR.
- RESIDUAL CURRENT DEVICE.
- CONTACTOR - NORMALLY OPEN.
- CONTACTOR - NORMALLY CLOSED.



**DETAIL**  
TYPICAL OUTLET MOUNTINGS  
NOT TO SCALE



**SCHEMATIC**  
RJ45 PINOUT CONFIGURATION  
NOT TO SCALE



**DETAIL**  
HAND DRYER CONNECTION  
NOT TO SCALE

ELECTRICAL DESIGN GROUP BRISBANE  
PTY LTD  
ACN 092 710 793  
TRADING AS:  
ELECTRICAL DESIGN GROUP

THE COPYRIGHT OF THIS DRAWING  
REMAINS THE PROPERTY OF THE  
ELECTRICAL DESIGN GROUP.  
USE FIGURED DIMENSIONS  
IN PREFERENCE TO SCALE.  
ALL DIMENSIONS TO BE  
VERIFIED ONSITE.

**ELECTRICAL DESIGN GROUP**  
ELECTRICAL BUILDING SERVICES CONSULTANTS  
BRISBANE GOLD COAST

P.O.Box 15, Sherwood Q.4075  
Phone: (07) 3278 4375  
Email: brisbane@edg.net.au  
Web: www.edg.net.au

PROJECT:  
**KINGS CHRISTIAN COLLEGE  
CHAMBERS FLAT, SENIOR SCHOOL CHA12**

38-112 ANZAC AVENUE, CHAMBERS FLAT

D	CONSTRUCTION	26/03/2026
REV:	DESCRIPTION:	DATE:

DRAWING:  
**ELECTRICAL SERVICES  
LEGEND & DETAILS**

SCALE:  
NOT TO SCALE AT A1

PROJECT NO:  
**C3474a**

DRAWING NO:  
**E01**

REVISION:  
**D**